


 Teton Photography Group

# Organizing your Image Library

Finding any image in 10 seconds  
Loren Nelson  
[www.NaturalPhotographyJackson.com](http://www.NaturalPhotographyJackson.com)

 **TPGed**  
Photography Education in the Tetons

 **TPGed**  
Photography Education in the Tetons

## Levels of Learning

- Knowledge (recall of information)
- Comprehension (understanding)
- Application (using the concept)
- Analysis (understanding of structure / organization)
- Synthesis (producing something new)
- Evaluation (using learning to make judgments)

## Agenda for the evening

- Welcome and introductions
- Overview operations / modules in LightRoom
- Review the LR Library Module
- Discuss tools during import that help forever
- Define catalog, folder, and collection
- Create smart collections to track images
- Discuss export tools
- Wrap-up by 8 PM

## Learning Objectives

- At the end of this session, you will be able to:
  - Discuss the Library module of Adobe Lightroom
  - List common organizational methods
  - Understand hierarchical key words
  - Describe the use of Catalogs, Folders, and Collections
  - Consider advantages of organizational model depending upon your volume and type of shooting
  - Be able to locate any image you have ever taken in 10 seconds or less

## Common story

- “I have taken 5,000 photos and I never look at them because I can’t find the image I want...”

## LightRoom vs PhotoShop

### LightRoom

- Synchronized editing
- Image storage system
- Database / search engine
- Adobe Camera Raw
- Image-level editing
- Non-destructive edits
- Limited local edits

### PhotoShop

- Single image editing
- Bridge is viewer
- Adobe Camera Raw
- Pixel-level editing
- Destructive edits
  - Smart objects
- Layers & overlays
- Masks
- Content-aware fill

The programs are different but complementary.

## Watch my *jargon*

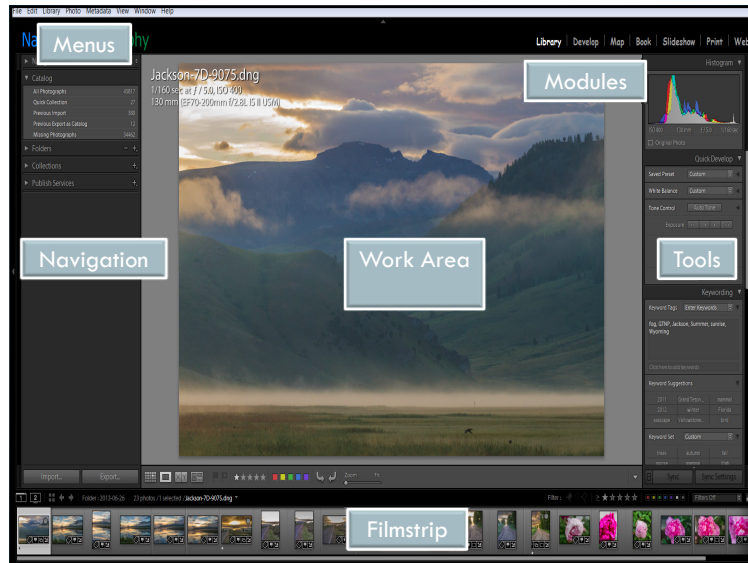
- Photo editing software seems complicated because of complex language used
  - Learn the language and it is easy!
- If (when) I slip into *jargon* – stop me until I clarify all of the terms used

## Adobe LightRoom®

- First Adobe program designed for photographers
- Advanced CameRaw interface / RAW conversion
- Totally non-destructive editing
- High-volume work-flow support
- Image filing, organization and recovery
- Outputting for prints, web, slide shows, books

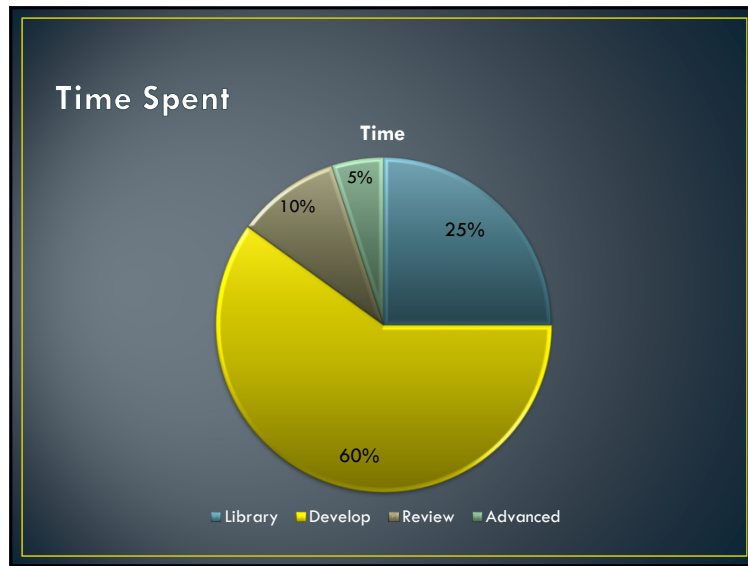
Lightroom is a photo database

Work up front saves massive amount of time down stream



## LightRoom Modules

- Library – organize your images
- Develop – process your images
- Map – geo-tag your images
- Book – create a photo book
- Slide show – create a slideshows
- Print – print your images
- Web – create a web objects



## Import Scripts to Automate Workflow

- Set image source
- Import from card reader (USB 3) not camera
- Add, Copy, or convert to DNG
- Rename
- Automatic adjustments
- Add metadata
- Apply preset
- Create preview
- Set image destination and file hierarchy

## Presets are powerful tools

- Standard, optional, user created
- Color or monochrome / picture style
- White balance and tint
- Exposure, contrast, and saturation
- Whites, highlights, shadows, and blacks
- Effects and presence (clarity & vibrance)
- Sharpening and noise reduction
- Can change at any time in Develop Module

## Library Module

- Catalog (virtual)
  - Pointers to image location
  - Work spaces with all adjustments and previews
  - Key word tags
  - Rate, label, comment, title, EXIF, metadata
  - Geo-tags
- Folders and files (images)
  - Browser and file manager
  - Physical location of images
- Collections (virtual)
  - Powerful organizational tools
  - Smart (dynamic) collections
  - Static collections
- Publish services
- Import, convert, and export images

**No  
images**

Your actual  
files (pictures)

Database  
Adobe Bridge  
CameraRAW (ACR)  
User-friendly

## LightRoom Catalogs - core

- Virtual spaces to store all metadata and adjustment information about images
- Does **NOT** contain the images
- Metadata:
  - Data about data
  - EXIF, camera, lens, settings
  - Owner, copyright, title, comments
  - Key words
  - Geo-tags
  - Virtual data
- How many catalogs?

1

## Folders

- Physical locations of the images (files)
  - Folder and sub-folder destinations on import
  - (Re-)naming your files
  - (Suggestion: Keep camera-assigned file number)
- Common folder organization:
  - Year and date
  - Location
  - Job, shoot, or client
  - Subject
  - How YOU think about your images
- Change name/location **ONLY** in Lightroom

## Folder naming choices

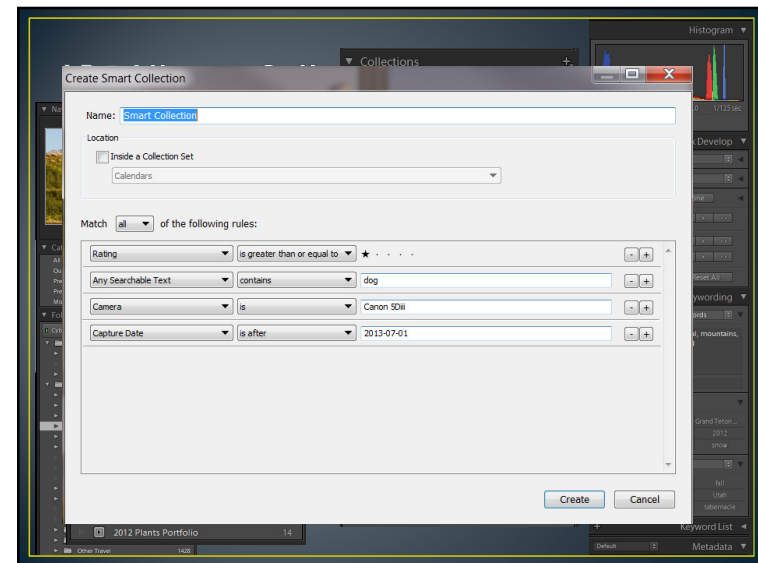
- How often do you shoot?
- Are you a “binge” shooter?
- Do you shoot assignments / jobs?
- Are you a travel photographer?
- Do you shoot the same areas/subjects frequently?
- Do you shoot family holiday photos?

## High volume sorting of images

- Flags: Pick (P), none, Reject (X)
- Rating: zero to five stars (0-5)
- Color: none to one of five color frames (6-9)
- File type: RAW, JPEG, video, others
- Automatic image sets:
  - Last Import
  - Quick Collection
  - Target Collection
- **Key words**, folder, title, caption, other
- Any metadata: camera, lens, EXIF, other

## Hierarchical Key Words

- State, location, season
- Subject / genre
- Nested key words
  - Wildlife: fauna: mammal: ungulate: elk
  - Bull, cow, calf
  - Specifics: velvet, rut
- Quick selection of up to nine tags





## Image Retrieval

- Any folder
- Any collection
- Title, caption, key word, metadata
- Attribute: rating, pick, color code, file type
- Camera, lens, setting
- Available in grid view (G)

## Export vs Publish

- Export places the images in a static location
- Publish uses plug-ins to manage sites
  - Sites on-line or disk/folder
  - Edits and updates are managed
  - Deletions are synchronized
  - “Smart” file management
  - Can retrieve on-line comments

## My Workflow

Library  
Module  
15-20%

- Import, convert to DNG, re-name files, presets, meta-data, lens corrections
- Sharpen and noise reduction
- Key words
- Create preview images
- (Geo-tag images – Map Module)

Develop  
Module  
>75%

- Crop & level; check / remove sensor dust
- Set white and black points; Open highlights and shadows
- Check color temperature, tint, graduated filter, re-touch exposure / contrast
- Brush local exposure, tweak clarity, vibrance and saturation, sharpen/noise
- Perspective control, vignette, grain; radial filter; clean-up distractions

Photoshop  
<5-10%

- High dynamic range (HDR) image
- Panorama image or focus-stacking
- Precise local corrections needing masks, layers or content-aware fill
- Special effects, filters, text, file format, resizing

## Summary



- Powerful database for image organization
- Thoughtful use of catalogs, folders, **key words**, and collections will allow easy location of individual and groups of images
- Image organization takes some **up-front** time but pays you dividends as your portfolio increases
- Collections & Smart Collections organize you
- Seamless integration with other Adobe and third-party products

